

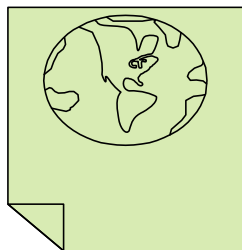
(seasonally adjusted state exports, from page 3)

optical and medical instruments, and machinery and computers.

The chart on page three shows Massachusetts seasonally adjusted total exports, where total exports is equal to unadjusted exports for 84 industries plus adjusted exports for the 14 with seasonal trends. The adjusted data (in blue) generally have smaller highs and lows than the unadjusted data (in pink). January and February show the largest upward adjustments each year, while December and March have the largest downward adjustments.

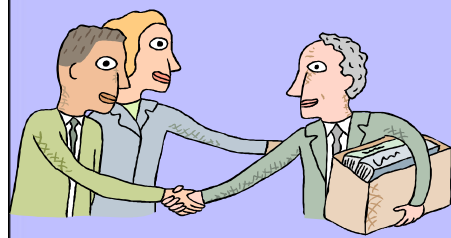
The State's January 2003 export increase is due to other trends, as

opposed to seasonality since the seasonally adjusted gain was even larger than the unadjusted gain. Seasonally adjusted Massachusetts exports grew 20% in January 2003, the state's largest month-to-month increase in the past three years.



A Fond Farewell...

The State Data Center bids a fond farewell to Richard Ureña and Jim Westrich. Rich who was our Network Manager is now in process of getting his license to become a commercial airline pilot. Jim who was our Senior Data Analyst/Data Specialist has taken a position at the Department of Medical Assistance in Boston as a Health Economist. Good luck to both of you!



104773

MISER 128 Thompson Hall
University of Massachusetts
200 Hicks Way
Amherst, MA 01003-9277

ADDRESS CORRECTION REQUESTED



This Newsletter is produced by the
Massachusetts Institute for Social and
Economic Research (MISER)
128 Thompson Hall
University of Massachusetts
200 Hicks Way
Amherst, MA 01003-9277

Data Center Manager: John Gaviglio
Editor: Deb Furioni
Phone: (413) 545-3460
FAX: (413) 545-3686
Email: miser@miser.umass.edu
Web Page:
<http://www.umass.edu/miser/dataop>

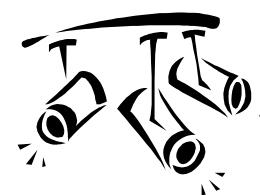
Our Boston office location:
McCormack Building Room 1004
Ashburton Place
Boston, MA 02133
Phone: (617) 727-4537
FAX: (617) 727-4660
Email: wmurray@miser.umass.edu

Massachusetts State Data Center Newsletter

Vol. 5, Issue 1

May 2003

A Publication of MISER, the Massachusetts Institute for Social and Economic Research, University of Massachusetts, Amherst



Highlights from Misertrade

by Linda Downs-Bembury, Foreign Trade Data Analyst



Award Received

The Trade area at MISER was recently awarded the "Global Export Leadership Award" from the Alliance for the Commonwealth. This award is given to a Massachusetts company, organization, government agency, or individual that demonstrates significant leadership in making Massachusetts a global competitor. This recognition is the result of a cooperative effort of many staff at MISER. The Trade area will continue to strive to make its data timely, reliable and detailed.

Library Access

Also new this month is a searchable Misertrade database within the University of Massachusetts Amherst (UMass) library system. This database can be used by faculty, students, and staff at UMass. To access this database, go to: <http://www.library.umass.edu/cgi-bin/aka/databases.cgi> and scroll down to Misertrade.

This access is only available to UMass campus users. Remote access is available only to those who use UMass as their Internet Service Provider. Misertrade provides the most extensive U.S. trade database available online including:

State Exports

- Monthly by Harmonized System (HS) commodity (1996-present)



- Quarterly by NAICS industry (1997-present)
- Quarterly by SIC industry (1988-2000)
- Quarterly by port of exit (1997-present)

US Exports and Imports:

- Monthly by District of Exit/Entry by HS commodity (1998-present)
- Annually by Port of Exit/Entry by SITC commodity (1999-2002) **New!**

Japanese Exports and Imports:

- Monthly by HS commodity (1998-present) **New!**

Misertrade is user-friendly and provides extensive graphics and mapping capabilities. MISER is currently marketing its trade database to other libraries.

For more information on Misertrade, including how your library can subscribe, contact:

Linda Downs-Bembury
(413)545-3460 or via email
downsbem@miser.umass.edu

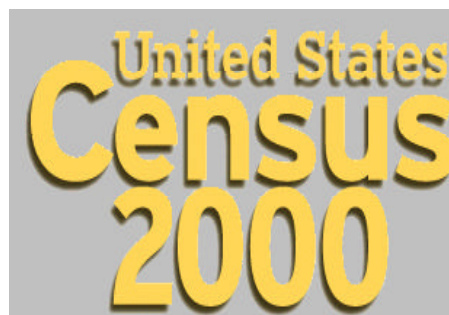
Upcoming Census 2000 Data Releases



by John Gaviglio, State Data Center Manager

Two new data files are due to be released by The U.S. Census Bureau: Summary File 4 (SF4), sometime between April and September and the Public Use Microdata Sample (PUMS) 1-percent sample file in April. Summary File 4 is derived from the Census long form questionnaire, a one in seven household sample. SF4 will provide the data user with an extensive list of tables similar to SF3 but for a specific race, tribe, Latino or ancestry group and geography. What is unique about SF4 is that it is repeated or iterated, for the total population and 335 additional population groups: 132 race groups, 78 American Indian and Alaska Native tribe categories, 39 Hispanic or Latino groups, and 86 ancestry groups. There will be iterations for any of these groups if they meet a population threshold. For more information

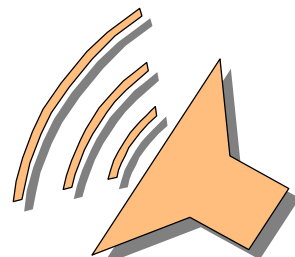
on these thresholds, go to the Census Bureau's SF4 web page: <http://www.census.gov/population/www/cen2000/SF4-pop.html>.



The PUMS file is designed for experienced programmers who need cross tabulations that are unavailable from the summary files. The Census Bureau will provide a national file with 1% of the individual housing unit

records and the characteristics of the people who reside in those housing units. The 1% file will provide the maximum amount of social, economic, and housing data, but to do so, it will sacrifice geographic detail. This file will identify only state and super-PUMA geographies. The super-PUMA is a new Census geographic entity which has a minimum population of 400,000. Super-PUMAs are aggregations of PUMAs (Public Use Microdata Areas) which each have a minimum population of 100,000. Massachusetts is subdivided into 48 PUMAs and 13 super-PUMAs for Census 2000. For more information on the PUMS files, check the Census Bureau's PUMS page at:

<http://www.census.gov/population/www/cen2000/pums.html>



Coming Soon: Seasonally Adjusted State Exports

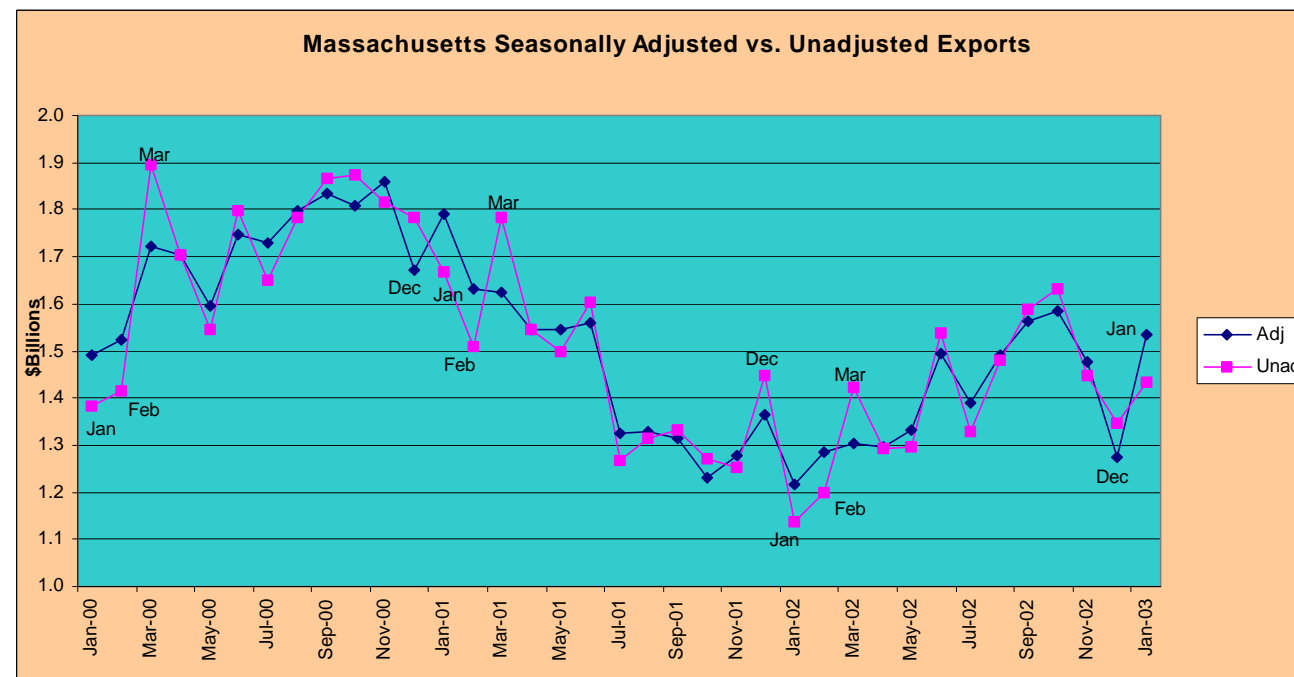
by Carla Miller, Foreign Trade Data Analyst

In Massachusetts golf ball exports peak in early spring, cranberries are harvested and shipped in the fall, and lobster exports spike way up in December for the holidays. With all the month-to-month seasonal fluctuations, how can you tell if an upswing in your state's exports is a

commodity chapters that are subject to seasonal trends. Seasonal adjustment facilitates an understanding of the direction and magnitude of changes that have been taking place over time and highlights short-run movements and

may cause spikes in the data. In addition, seasonally adjusted data are subject to revision as new data becomes available.

For Massachusetts, 14 of the 98 2-digit Harmonized System (HS) commodity chapters were



real increase or a just a seasonal peak? MISER's soon-to-be-released seasonally adjusted monthly state export series will provide the answer. Using the Census X-11/X-12 method, MISER has developed a methodology for identifying and seasonally adjusting for each state all 2-digit HS

underlying trends not caused by seasonality. On a cautionary note, monthly trade data can be subject to large fluctuations that are not due to seasonality. One-time or irregular shipments of major contract items such as aircraft, as well as gold and valuable artwork shipments,

identified as having seasonality. Besides fish, fruits and vegetables, and sporting goods, these commodity groups included some you wouldn't necessarily expect. In fact, the largest seasonal adjustments by dollar value for Massachusetts occur in the state's leading industries: electronics,

