

Massachusetts State Data Center Newsletter

A Publication of MISER, the Massachusetts Institute for Social & Economic Research,
University of Massachusetts, Amherst

Volume 1, Issue 2

1998

New MISER Population Estimates

by

John Gaviglio, Data Center Manager

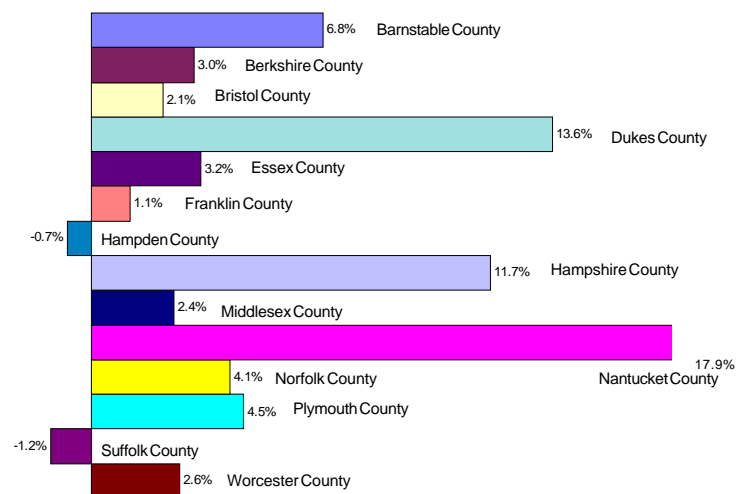
MISER has now released its latest population estimates for Massachusetts, its counties, cities and towns for 1995. The new estimates differ from those issued in previous years in that they include yearly estimates from July 1, 1990 to July 1, 1995. This will allow the user to observe yearly changes in population and their components of change: births, deaths, domestic migration and international migration.

The estimates are available in several different levels of detail, from five year age groups by sex by race by year by city and town, to total population by city and town. All files will be in Excel for Windows 95. An overview with maps, graphs, and a spreadsheet you can download free of charge, will be available on our Population Statistics web page at the following address:
<http://www.umass.edu/miser/population/index.html>.

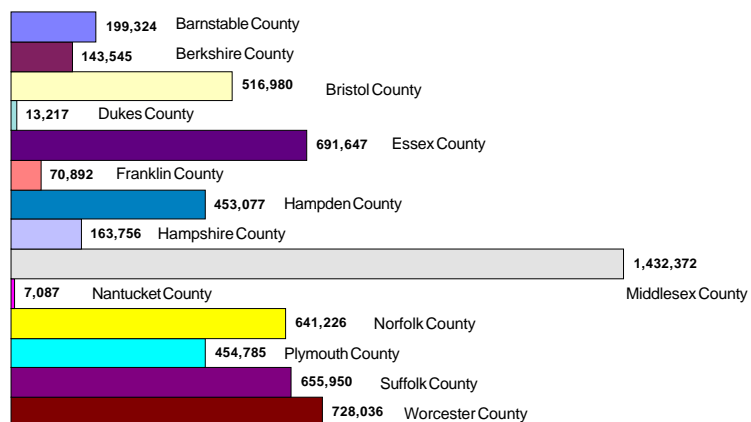
The entire spreadsheet series will be available on diskette or CD-ROM for \$25.

Please address all comments or questions to Dr. Zongli Tang by email at zongli@miser.umass.edu or by calling MISER at 413-545-3460.

County Change for Massachusetts from 1990 Census to 1995 Estimate



1995 Population Estimates for Massachusetts Counties



The Kirstein Business Branch of the Boston Public Library has information on businesses in MA and also other website links. Check out this informative website at <http://www.bpl.org/www/kbb/kbbhome.html>



Visit Our Web Site at www.umass.edu/miser/dataop



Web Site Update

by Dave Crout, Data Specialist

The Data Operations and Dissemination group within MISER has expanded its web site in the last few months, and continues to add data on a regular basis. The web site now contains population and housing reports from the 1990 Census for Massachusetts cities and towns, sample Equal Employment Opportunity (EEO) reports and profiles from the 1990 Census Summary Tape Files 3 and 4. All the files are available in Adobe Portable Document File (PDF) format (a link to download the free Adobe Reader is included on the page), while most are in comma-delimited and Microsoft Excel formats.

The web site also contains selected thematic and reference maps for Massachusetts areas. Most of the maps display data from the 1990

Census by Massachusetts cities & towns. These maps serve as an illustration of the types of maps the Data Center can produce.

A brief product list is included on the site, as are Internet links to various demographic and economic data sources, including selected Federal and Massachusetts state agencies. Our "What's New" page contains the latest data releases from agencies such as the Census Bureau, Bureau of Labor Statistics, or the Bureau of Economic Analysis as well as other additions to the site.

We welcome any suggestions or comments you may have about our site. The "Contact Us" page includes email addresses and telephone numbers. The Internet address is <http://www.umass.edu/miser/dataop>.

Did You Know...

■ About 29% of the nation's population (71.5 million people) lacked health insurance for at least one month in a 36-month period starting in early 1993, and approximately 4% (9.1 million people) were uninsured for the entire 36 months, according to a report released by the Commerce Department's Census Bureau. The report, *Dynamics of Economic Well-Being: Health Insurance, 1993 to 1995, P70-64*, provides a comprehensive look at those who do and do not have health insurance, the types of insurance they have and the characteristics of people who are covered by health insurance and of those who are not. It also provides information on how long people go without health insurance.

For the complete Census Bureau's Public Information Office Press Release go to <http://www.census.gov/hhes/www/hlth9394.html>

2-20610

MISER

Thompson Hall Box 37515
University of Massachusetts
Amherst, MA 01003-7515

ADDRESS CORRECTION REQUESTED



*This Newsletter is produced by the
Massachusetts Institute for Social and
Economic Research (MISER)
Thompson Hall, Box 37515
University of Massachusetts
Amherst, MA 01003-7515*

*Data Center Manager: John Gaviglio
Editor: Deb Furioni
Phone: (413) 545-3460
FAX: (413) 545-3686
Email: miser@miser.umass.edu
Web Page: <http://www.umass.edu/miser/>*

*Our Boston office location:
Saltonstall Bldg. Rm 1103
100 Cambridge St.
Boston, MA 02133
Phone: (617) 727-4537
FAX: (617) 727-4660
Email: wmurray@miser.umass.edu*