

University of Massachusetts Donahue Institute
Population Estimates Program
For Release March 20, 2008

U.S. Census Releases County-level Population Estimates for 2000 to 2007

The U.S. Census Bureau released July 1st county-level population estimates for 2000 to 2007 for Massachusetts and the U.S. on March 20, 2008. These estimates are based on the demographic “components of change”, which include births and deaths, internal and international migration, and the group quarters population for each county. To go directly to the U.S. Census estimates page, follow this link:

<http://www.census.gov/popest/counties/>

State Total

State-level estimates, which were previously released by Census in December of 2007, increased 15,366 persons, or 0.24% from the previous year. Massachusetts population increased in 2006 (5,252 persons, or .08% over 2005), after losses in 2005 and 2004 (-4,539 or -0.07% and -4,834 or -.08%, respectively.) Massachusetts has lagged U.S. population growth by an average of 0.75% since 2001. The U.S. population is estimated to have grown 7.2% since the last Census in 2000 while Massachusetts has grown by 1.3%. Appendix A: *Massachusetts State Population Totals* includes charts showing the growth of the estimated Massachusetts Population as compared to the U.S.

County Totals

The greatest numerical increases from 2006 to 2007 were: Middlesex County 6,672; Suffolk County 2,910; and Norfolk County 2,380. The greatest numerical decreases were: Barnstable County -1,317; Hampden County -637; and Berkshire County -421.

In terms of percentage of change, the largest gains were in: Nantucket County at 1.53%; Middlesex at 0.45%; and Suffolk at 0.41%. The largest decreases were in: Barnstable County at -0.59%; Berkshire at -0.32%; and Franklin at -0.15%. In all counties the increase or decrease in the estimated population from 2006 to 2007 was less than 1%, except for the 1.53% increase in Nantucket County.

Tables in Appendix B show the Annual Estimates of the population for counties in Massachusetts from 2000-2007 (Table 1); the numerical change from previous year, including rankings (Table 2), and the percentage change from the previous year (Table 3). Please note that the estimates for 2001 to 2006 shown below incorporate the latest information available to US Census, and will differ from the previous “vintage” estimates produced for those years. Charts in Appendix B show the percent change by county from 2006 to 2007 (Chart A) and from 2001-2007 (Chart B).

Components of Change and the UMDI Population Estimates Program

As described above, county level estimates are produced by the U.S. Census Bureau using the latest available data available for the various components of change, which include births and deaths, internal (within the United States) and international migration,

and the group quarters(GQ) population for each county. Appendix C charts show the changes in the Massachusetts population estimates within these individual components, while charts in Appendix D compares these components at a county level.

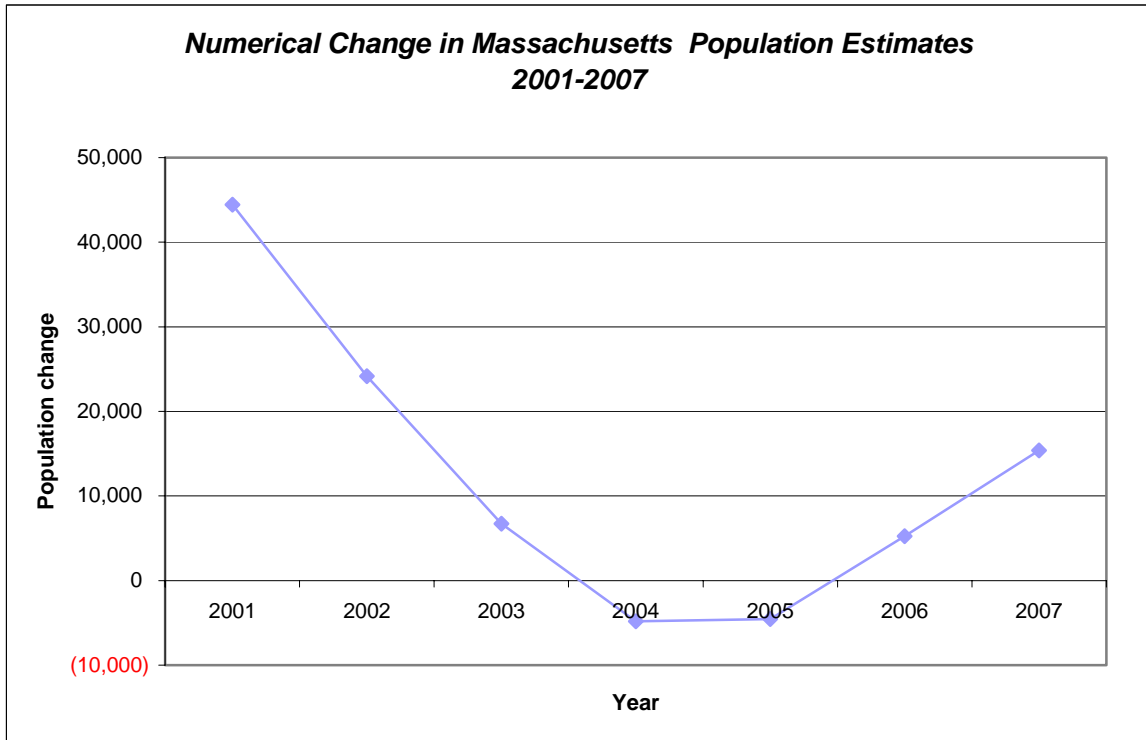
Census generates the new “vintage 2007” estimates after acquiring new administrative data components. Census also revises population estimates for previous years with updated components. It relies on the Federal State Cooperative Program for Population Estimates (FSCPE) member in each state to obtain the latest available data. In Massachusetts, the UMass Donahue Institute’s Population Estimates Program (UMDI-PEP), funded by the Office of the Secretary of the Commonwealth, is the FSCPE representative to the Census Bureau. The Massachusetts Department of Public Health provides UMDI with Vital Statistics updates and the regional planning agencies help UMDI review Census’s city and town housing unit estimates.

UMDI-PEP has developed an extensive survey process to update the state’s GQ (dormitories, nursing homes, and prisons for example) population for Census. There has not been a complete group quarters survey in Massachusetts since 2002, when the state last funded a population program. Census relies on the state FSCPE contacts for yearly intercensal GQ updates, but if they are not made, will use Census 2000 GQ populations until the results from the 2010 are tallied . UMDI started a statewide survey of GQs in December of 2007. Since the survey started three months ago, UMDI has identified approximately 175,000 persons living in group quarters. These revised data inputs may be utilized to effect future revisions of the Massachusetts population estimates in the following ways.

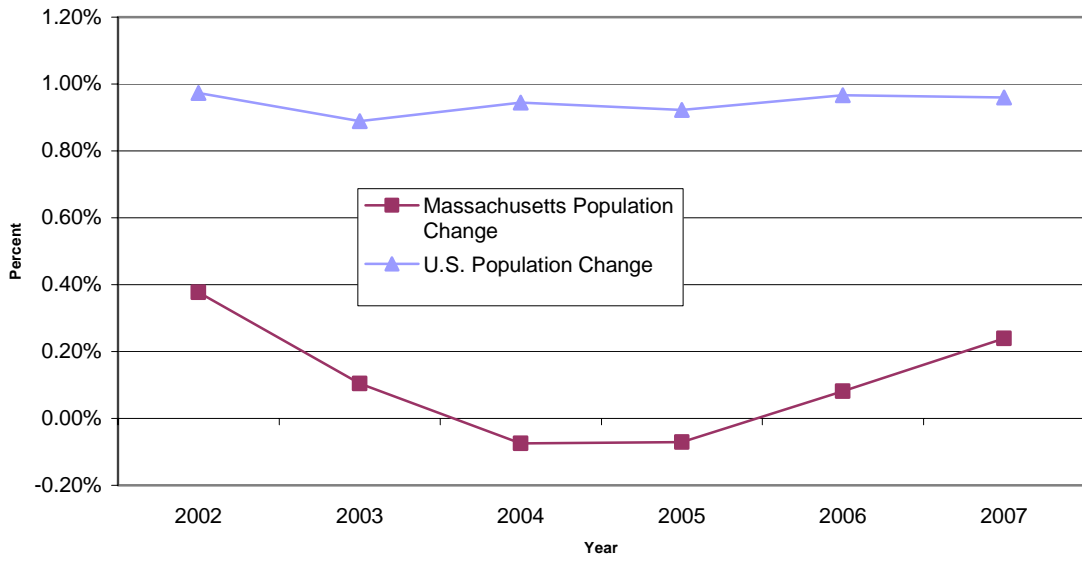
- 1) In June of 2008, we will have the opportunity to submit the GQ information we have collected to U.S. Census as part of the Group Quarters Review Process. UMDI anticipates that some of the larger group quarters in Massachusetts that have been surveyed will be revised upwards and affect the 2008 estimates for Massachusetts.
- 2) Between July 2008 and October 2008, individual cities and towns will have the opportunity to challenge the sub-county estimates released by U.S. Census in July. Group quarters information we have collected can be used to support individual challenges where UMDI group quarters population differs from Census estimates for that municipality.
- 3) Finally, the tracking of accurate building permit, demolitions, and adaptive re-use data may be used to support municipal challenges to the sub-county population estimates.

Appendix A: Massachusetts State Population Totals

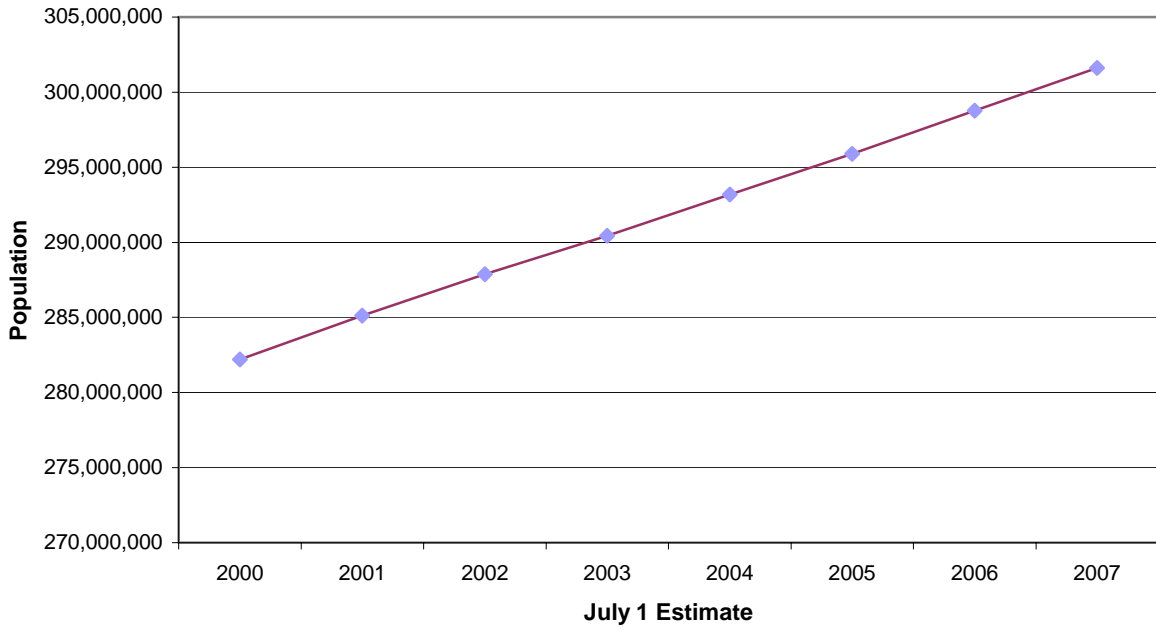
The Massachusetts state-level increases are shown below in Chart A, while the total Massachusetts population is shown in chart B. Chart C compares the rate of change in population in Massachusetts to that of the U.S. as a whole. It shows that the U.S. population overall has been increasing at a rate of 0.89% to 0.97% since 2001, while the Massachusetts rate of change has fluctuated between -0.08% and 0.38%. Please note that the estimates for 2001 to 2006 shown below incorporate the latest information available to US Census, and will differ from the previous estimates produced for those years. Also, year 2000 estimates are not included for comparison purposes due to input variances and methodological changes between 2000 and 2001.



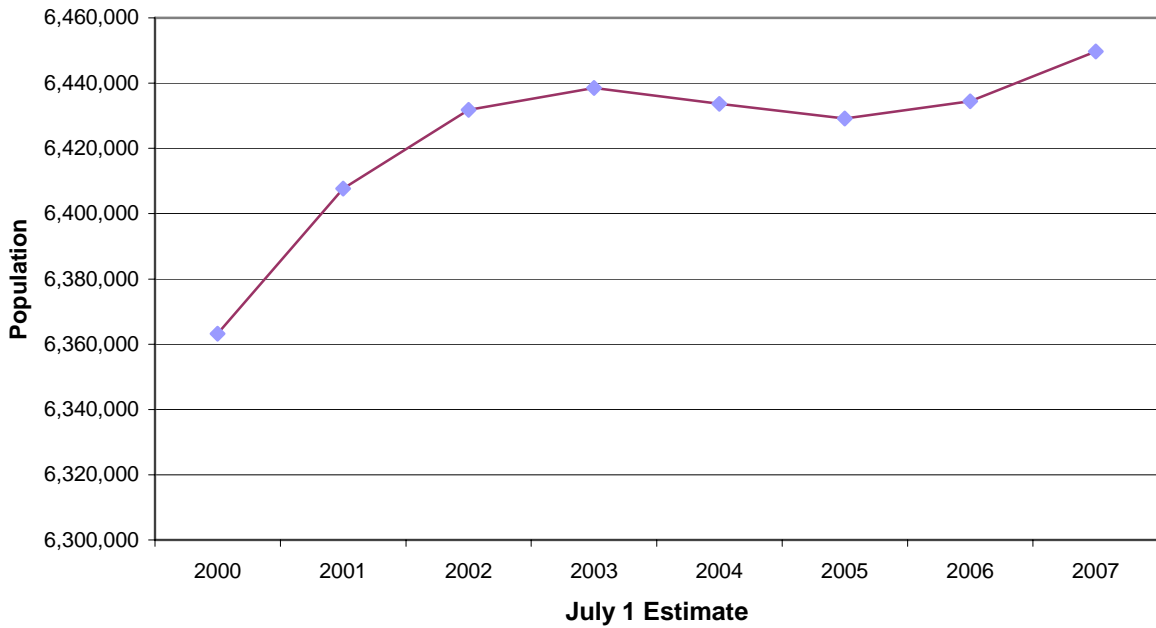
**Population Change in MA and U.S.
2002-2007**



Census Bureau Population Estimates for the U.S.



Census Bureau Population Estimates for Massachusetts



Appendix B: Annual Estimates of the Population for Counties of Massachusetts: April 1, 2000 to July 1, 2007; Numerical Change; and Percentage Change from previous year.

Table 1: Annual Estimates of the Population for Counties of Massachusetts: April 1, 2000 to July 1, 2007								
Geographic Area	July 1st	Population Estimates						
	2007	2006	2005	2004	2003	2002	2001	2000
Massachusetts	6,449,755	6,434,389	6,429,137	6,433,676	6,438,510	6,431,788	6,407,631	6,363,190
Barnstable Cty	222,175	223,492	225,055	226,959	228,198	227,116	225,086	223,233
Berkshire County	129,798	130,219	131,020	131,840	132,522	133,005	133,710	134,797
Bristol County	543,024	542,701	543,714	545,040	544,972	542,728	538,392	536,079
Dukes County	15,485	15,448	15,502	15,518	15,468	15,374	15,199	15,077
Essex County	733,101	731,501	730,922	731,560	733,047	733,688	731,127	725,393
Franklin County	71,602	71,706	71,913	71,918	71,864	71,820	71,601	71,497
Hampden County	457,908	458,545	459,194	459,580	459,682	458,484	456,571	456,587
Hampshire Cty	153,147	152,982	152,791	153,033	153,159	152,445	151,272	152,398
Middlesex Cty	1,473,416	1,466,744	1,465,097	1,468,444	1,471,174	1,473,811	1,476,610	1,469,303
Nantucket County	10,531	10,372	10,232	10,238	10,083	9,928	9,665	9,577
Norfolk County	654,909	652,529	651,358	652,874	653,075	654,304	653,755	651,274
Plymouth County	490,258	488,444	487,931	486,326	484,906	482,558	478,370	474,387
Suffolk County	713,049	710,139	707,170	705,620	708,010	708,692	705,168	690,883
Worcester County	781,352	779,567	777,238	774,726	772,350	767,835	761,105	752,705

Note: The April 1, 2000 estimates base reflects changes to the Census 2000 population resulting from legal boundary updates as of January 1 of the estimates year, other geographic program changes, and Count Question Resolution actions. All geographic boundaries for the July 1, 2007 population estimates series are defined as of January 1, 2007.
Source: Population Division, U.S. Census Bureau **Release Date: March 20, 2007**

Table 2: Numerical change from previous year								
	2007	2006	2005	2004	2003	2002	2001	Rank of Numerical change 2006-2007
Massachusetts	15,366	5,252	(4,539)	(4,834)	6,722	24,157	44,441	
Barnstable	(1,317)	(1,563)	(1,904)	(1,239)	1,082	2,030	1,853	14
Berkshire	(421)	(801)	(820)	(682)	(483)	(705)	(1,087)	12
Bristol	323	(1,013)	(1,326)	68	2,244	4,336	2,313	7
Dukes	37	(54)	(16)	50	94	175	122	10
Essex	1,600	579	(638)	(1,487)	(641)	2,561	5,734	6
Franklin	(104)	(207)	(5)	54	44	219	104	11
Hampden	(637)	(649)	(386)	(102)	1,198	1,913	(16)	13
Hampshire	165	191	(242)	(126)	714	1,173	(1,126)	8
Middlesex	6,672	1,647	(3,347)	(2,730)	(2,637)	(2,799)	7,307	1
Nantucket	159	140	(6)	155	155	263	88	9
Norfolk	2,380	1,171	(1,516)	(201)	(1,229)	549	2,481	3
Plymouth	1,814	513	1,605	1,420	2,348	4,188	3,983	4
Suffolk	2,910	2,969	1,550	(2,390)	(682)	3,524	14,285	2
Worcester	1,785	2,329	2,512	2,376	4,515	6,730	8,400	5

Table 3. Percent change from previous year and Census 2000 to 2006

	2007	2006	2005	2004	2003	2002	2001	Rank of Percent change 2006-2007
Massachusetts	0.24%	0.08%	-0.07%	-0.08%	0.10%	0.38%	0.70%	
Barnstable	-0.59%	-0.69%	-0.84%	-0.54%	0.48%	0.90%	0.83%	14
Berkshire	-0.32%	-0.61%	-0.62%	-0.51%	-0.36%	-0.53%	-0.81%	13
Bristol	0.06%	-0.19%	-0.24%	0.01%	0.41%	0.81%	0.43%	10
Dukes	0.24%	-0.35%	-0.10%	0.32%	0.61%	1.15%	0.81%	6
Essex	0.22%	0.08%	-0.09%	-0.20%	-0.09%	0.35%	0.79%	8
Franklin	-0.15%	-0.29%	-0.01%	0.08%	0.06%	0.31%	0.15%	12
Hampden	-0.14%	-0.14%	-0.08%	-0.02%	0.26%	0.42%	0.00%	11
Hampshire	0.11%	0.13%	-0.16%	-0.08%	0.47%	0.78%	-0.74%	9
Middlesex	0.45%	0.11%	-0.23%	-0.19%	-0.18%	-0.19%	0.50%	2
Nantucket	1.53%	1.37%	-0.06%	1.54%	1.56%	2.72%	0.92%	1
Norfolk	0.36%	0.18%	-0.23%	-0.03%	-0.19%	0.08%	0.38%	5
Plymouth	0.37%	0.11%	0.33%	0.29%	0.49%	0.88%	0.84%	4
Suffolk	0.41%	0.42%	0.22%	-0.34%	-0.10%	0.50%	2.07%	3
Worcester	0.23%	0.30%	0.32%	0.31%	0.59%	0.88%	1.12%	7

Chart A

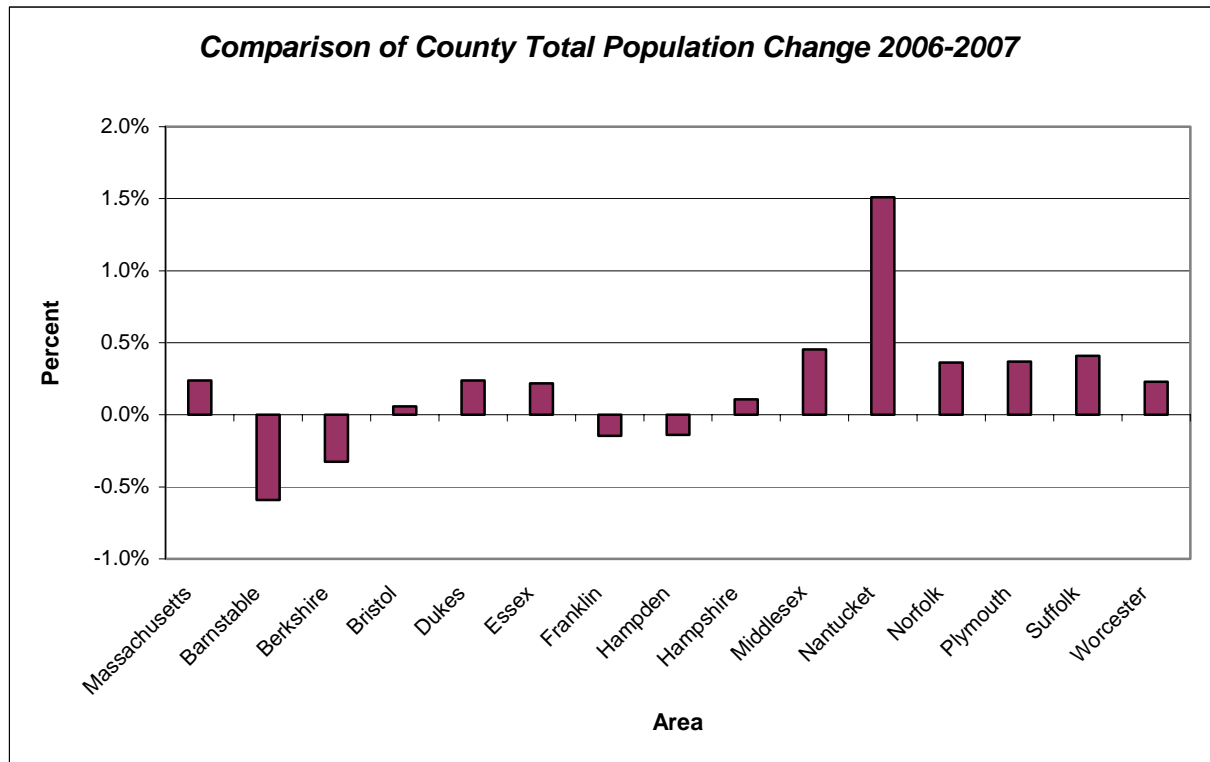
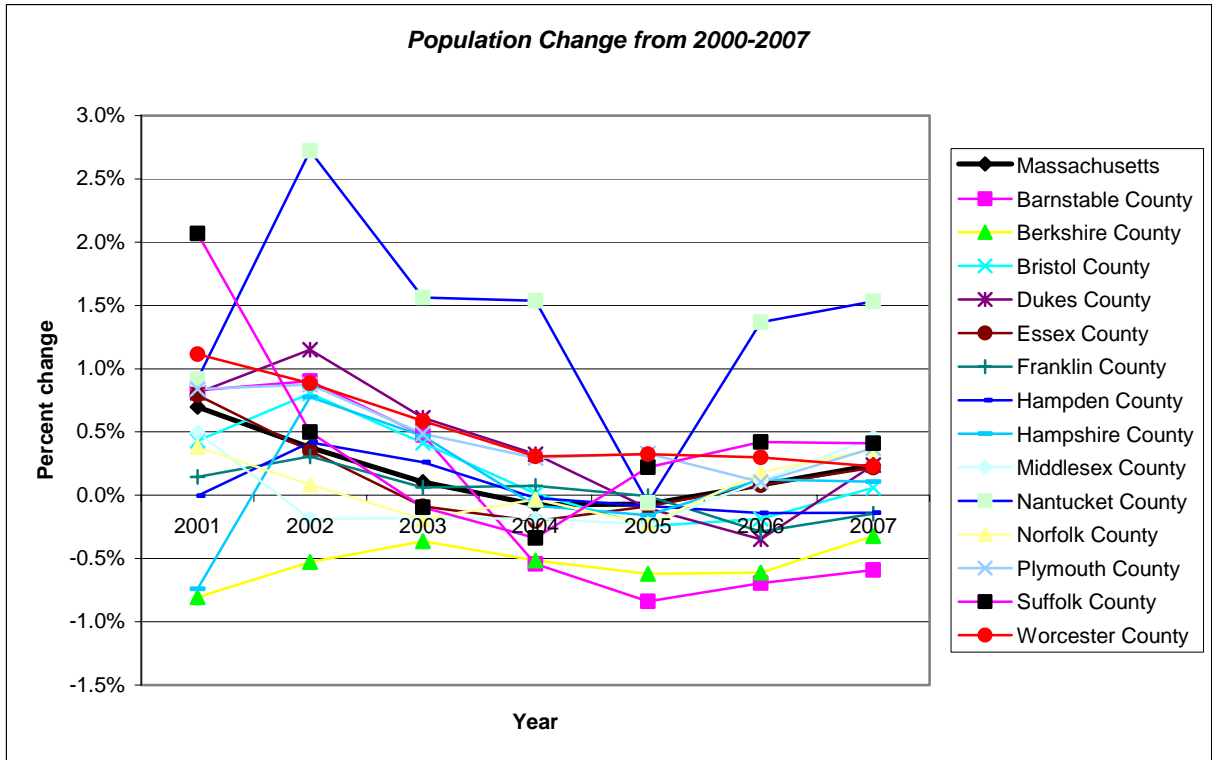
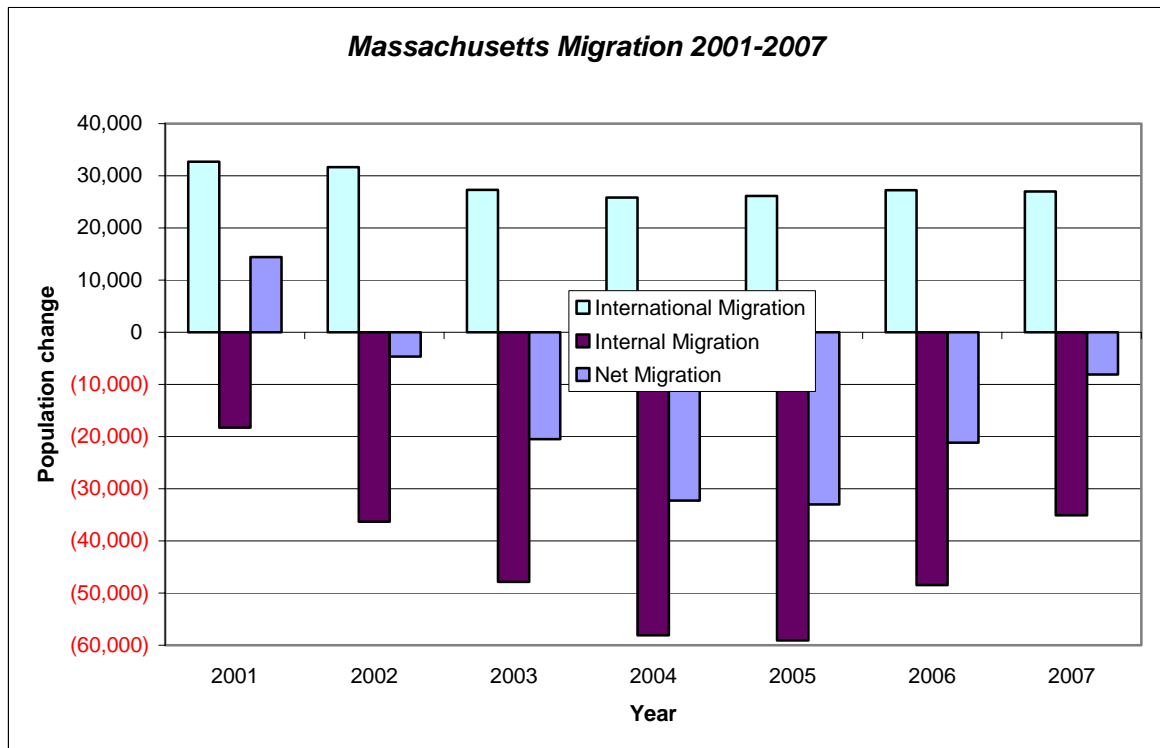
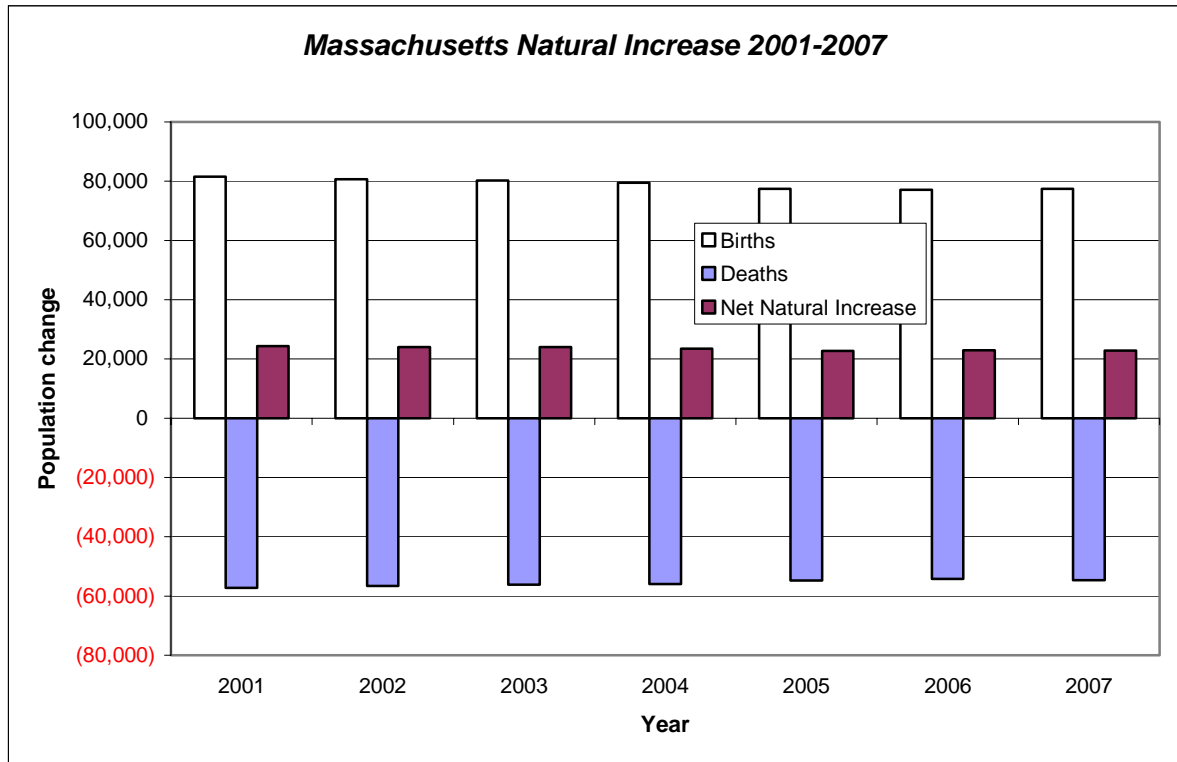


Chart B

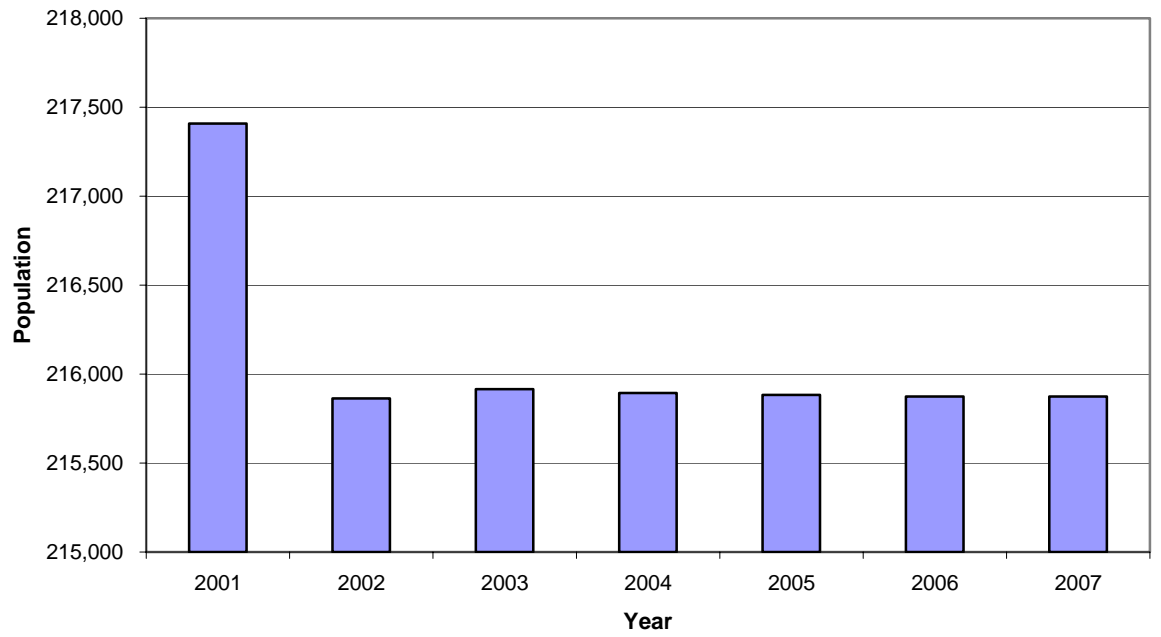


Appendix C:

Components of Change within Massachusetts Population Estimates 2001-2007



Massachusetts Group Quarters Estimate 2001-2007



Appendix D: Components of Change at County Level 2007

Chart A shows, for each county, the net of births and deaths (the natural increase) as a percentage of the total county population. Chart B details the numbers of births compared to deaths for each county in 2007. Chart C shows the 2007 net migration in each county as a percentage of the total county population, and Chart D shows this net migration broken out into internal and international for each county.

Chart A:

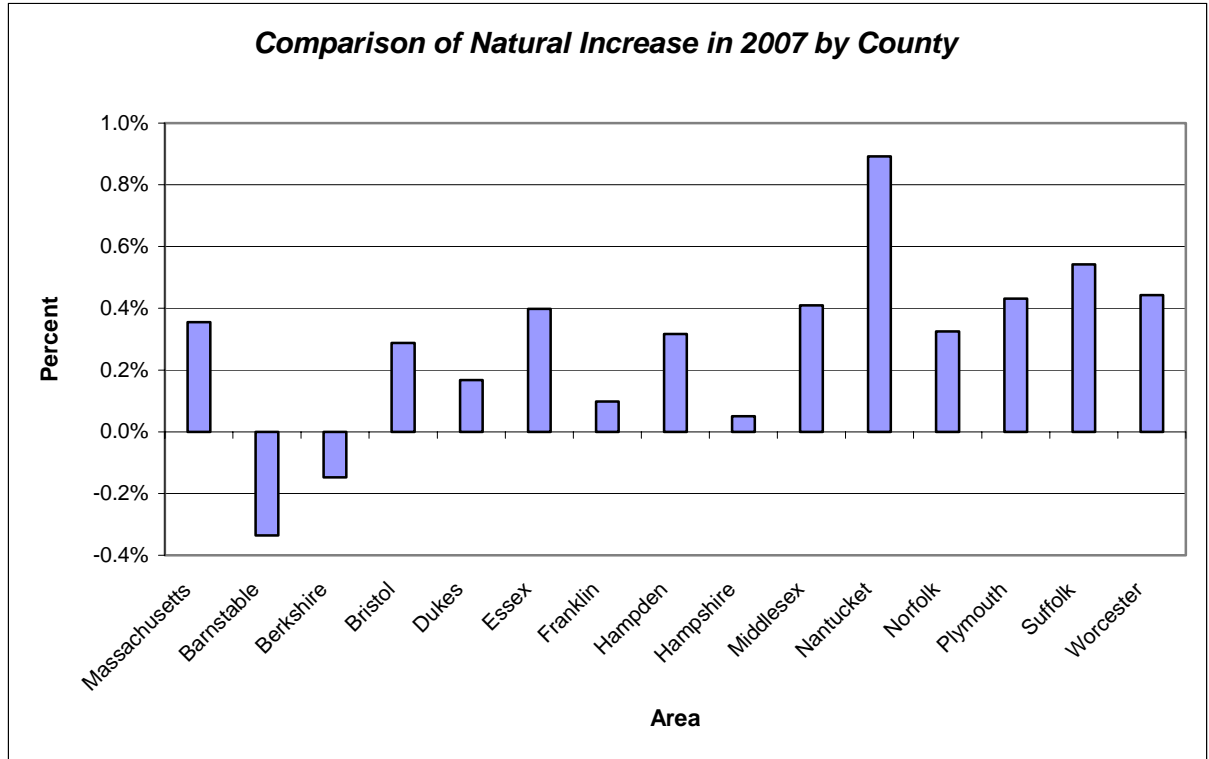


Chart B

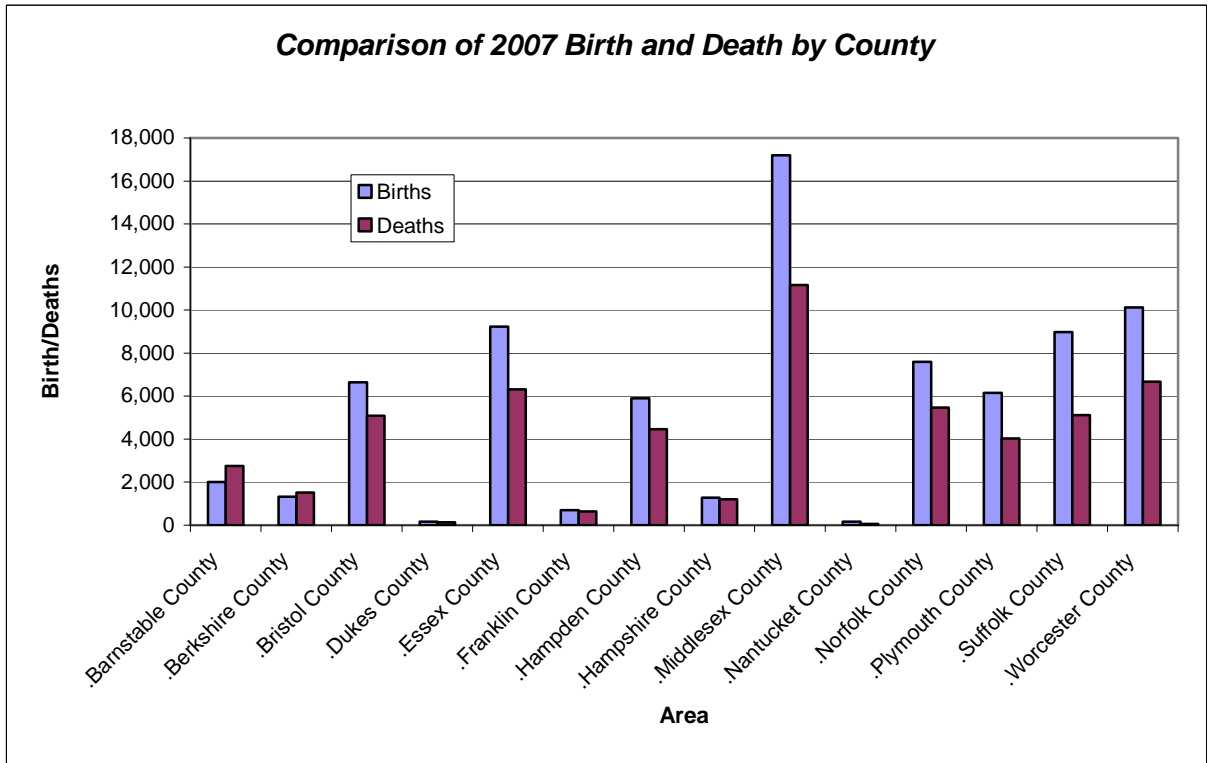


Chart C

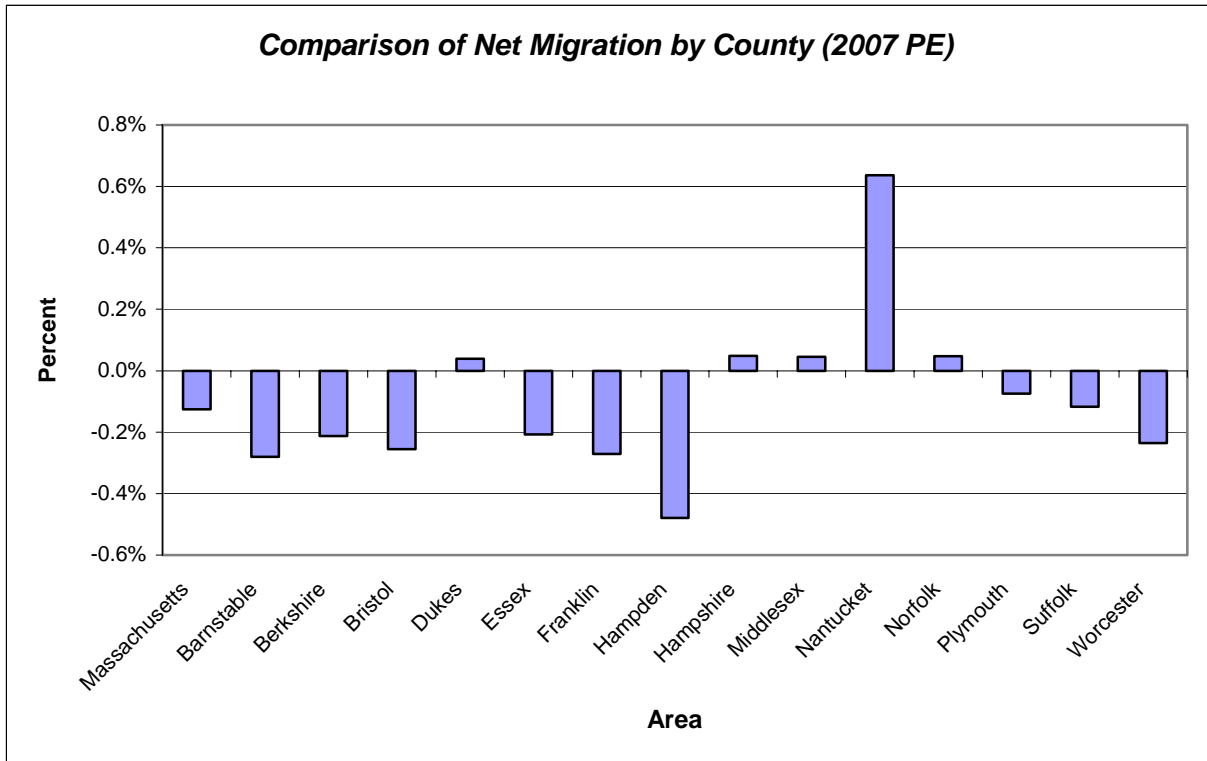


Chart D:

