

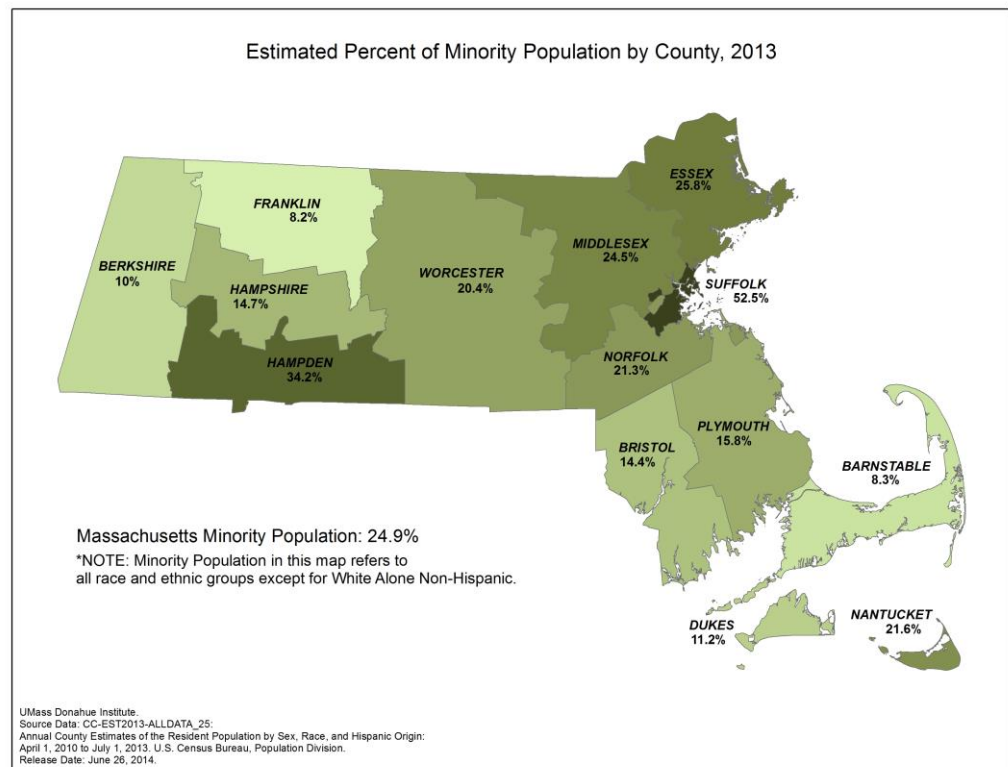
University of Massachusetts Donahue Institute Population Estimates Program Summary of U.S. Census Bureau 2013 County Characteristics For Release June 26, 2014

On June 26, 2014, the U.S. Census Bureau released its 2013 State and County Characteristics Estimates for Massachusetts, Puerto Rico and the United States. These estimates break down the estimated 2013 county populations, released in March of 2014, by age, sex, race, and Hispanic origin. The official U.S. Census Release and detailed tables can be found at: <https://www.census.gov/newsroom/releases/archives/population/cb14-118.html>

Race and Origin

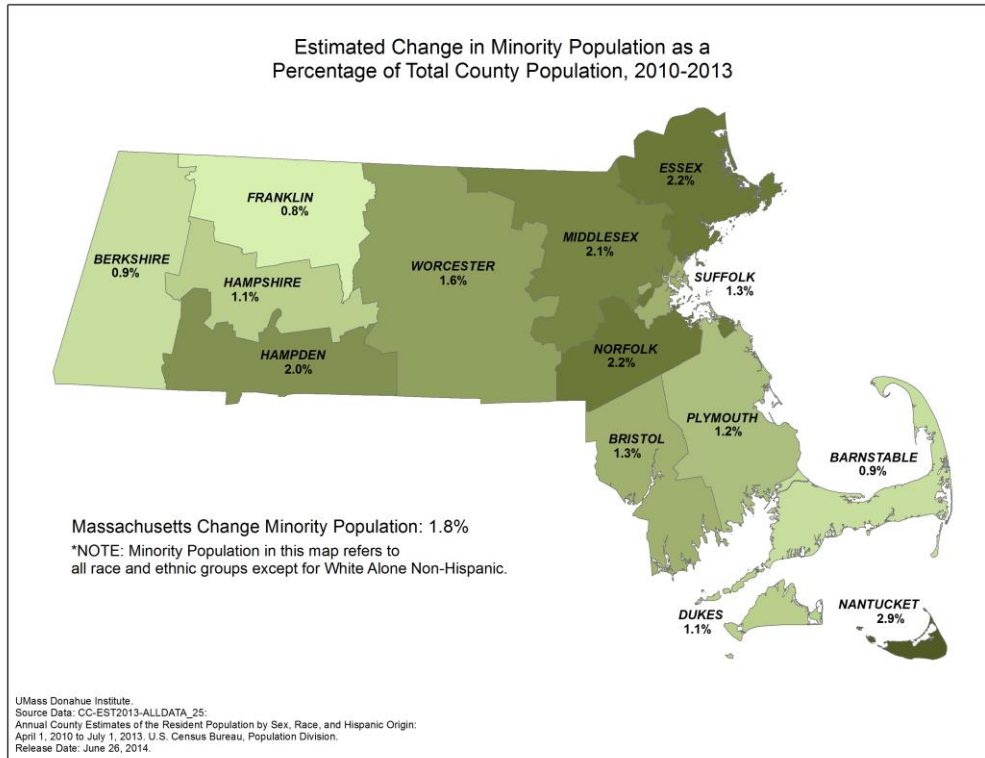
The estimates for Massachusetts follow the national trend, showing a population that is growing older and more racially and ethnically diverse. While Massachusetts is less racially and ethnically diverse than the U.S. as a whole, with a minority population¹ of just 24.9% compared to 37.4% in the U.S. overall, the minority population has been increasing in all Massachusetts counties since 2010 and beyond. The percent minority in Massachusetts has also been increasing slightly more rapidly in the state compared to the U.S., increasing from 24.3% to 24.9% percent in the last year – a gain of 0.6 percentage points - compared to 0.4% percentage points increase for the U.S. on average, which changed from 37% to 37.4% minority from 2012 to 2013. Cumulatively since the 2010 Census, Massachusetts has increased its minority share by 1.8 percentage points compared to 1.3 percentage points for the U.S. on average.

The Massachusetts counties with the greatest percentage of minority populations in 2013 were Suffolk (52.5%), Hampden (34.2%), and Essex (25.8%). The counties with the lowest percentage minority were Franklin (8.2%), Barnstable (8.3%), and Berkshire (10%).



¹ “Minority” population is defined for the purposes of this report as the Hispanic and non-white/non-Hispanic population.

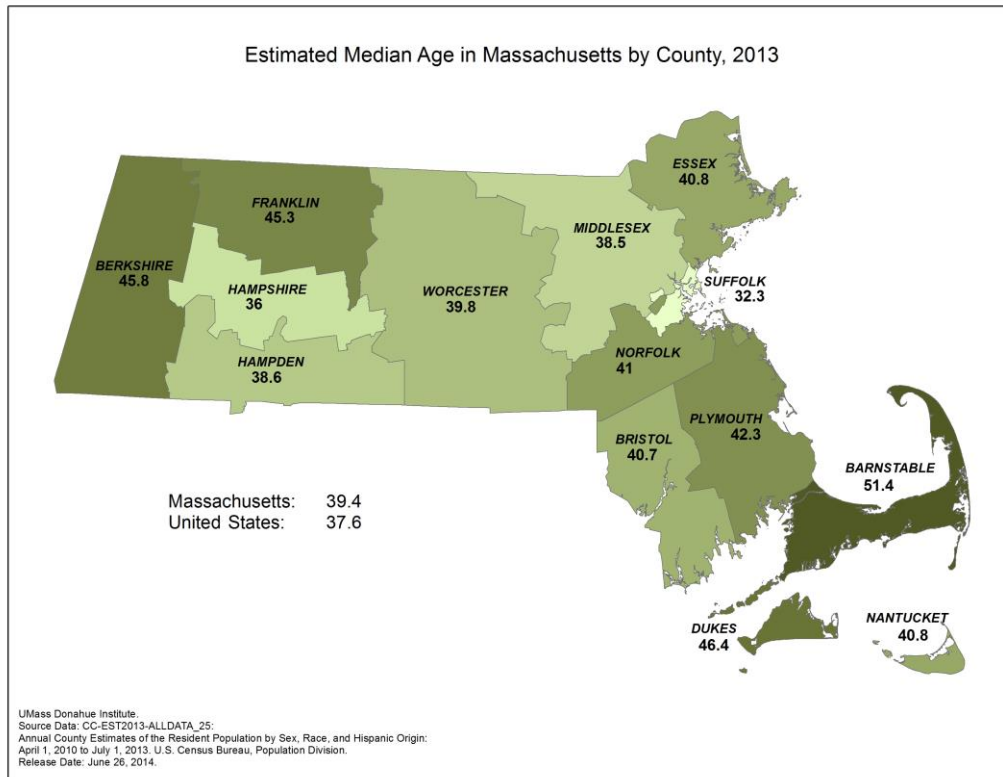
The greatest increases in the percent of minority population as a percent of the total population since 2010 (by percentage point gain) were seen in Nantucket, Norfolk, and Essex Counties. Barnstable, Franklin, and Berkshire Counties showed the least increase in percent minority since 2010, and also represent the three Massachusetts counties that have lost population since the April 2010 Census count. (See Appendix B to this report for all Massachusetts counties.)



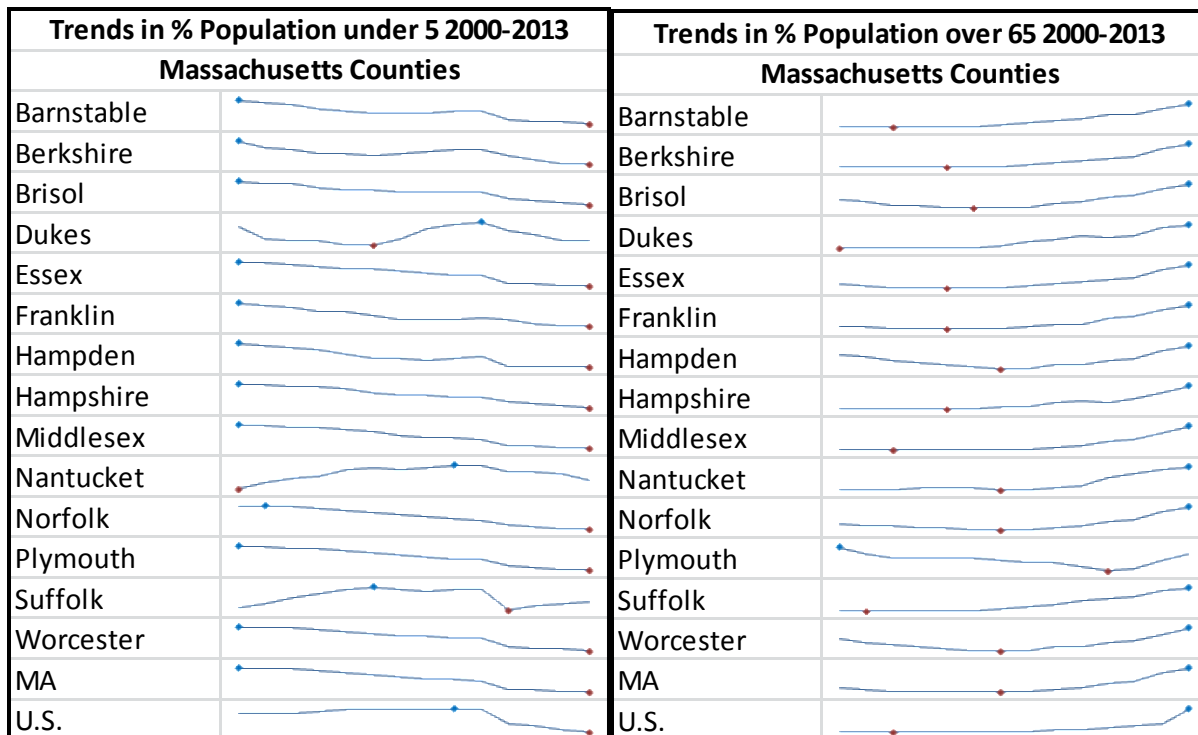
The counties with the highest percentage of Hispanic residents in Massachusetts in 2013 were Hampden (22.6%), Suffolk (21.3%), and Essex (18%); those with the smallest were Barnstable, Dukes, and Plymouth (2.6%, 2.9%, and 3.5%, respectively). The overall Massachusetts population was 10.5% Hispanic in 2013, compared to 17.1% Hispanic for the U.S. on average.

Age

Massachusetts is also older than the U.S. as a whole, with an estimated median age of 39.4 years in 2013, compared to a median of 37.6 in the U.S. on average. Counties with the highest median age include Barnstable (51.4 yrs.), Dukes (46.4 yrs.), and Berkshire (45.8 yrs.), while the youngest counties include Suffolk (32.3 yrs.), Hampshire (36 yrs.), and Middlesex (38.5 yrs.). See map below and Appendix C to this report for details.



The aging population in Massachusetts, as with the U.S. as a whole, is reflected in the long term trends among age cohorts. Since 2000 and beyond, the percentages of persons over 65 in the population have increased while the percentages of children under 5 have been decreasing, on average. The trend lines below show how the percentages of these age groups have changed since 2000, by county and for Massachusetts and the U.S. The highest points in the time series are represented by blue dots, the lowest by red.



Comparing the percentage of the Hispanic population by county against the median age by county, we see that Massachusetts follows the national trend in which a higher percentage of Hispanic population generally relates to a lower median age. New estimates released by the U.S. Census Bureau for the Nation shows that the Hispanic population has a median age much lower than the non-Hispanic; 28.1 years compared with 40.2 years for the non-Hispanic U.S. population. Likewise in Massachusetts, the median age among the Hispanic population is 27.2, compared to 41.3 for Non-Hispanic.

At the county level, we see that the Barnstable and Dukes Counties are the two oldest in Massachusetts, in terms of median age, and are also the two counties with the lowest percent of Hispanic population. On the other hand, the “youngest” county, Suffolk, has the second highest percentage of Hispanic population in Massachusetts.

The new Census Bureau data (see Table PEPASR6H) also shows that half (50.0 %) of the nation’s children younger than five were a minority in 2013 with 25.8% of all children under 5 categorized as Hispanic. In Massachusetts, 38.7% of children younger than five were a minority and 19% were Hispanic. One can also compare the *Estimated Percent Minority Population by County* map to the *Estimated Percent of County Population under 5* map attached to this report to get a sense of how race and ethnicity relate to age around Massachusetts.

For more details on selected Massachusetts characteristics data and trends, please refer to the tables in the appendices to this document. You may also view the complete datasets by visiting the U.S. Census Bureau’s Estimates page at: <http://www.census.gov/popest/estimates.html>

Attachments to this report include:

Appendix A1: Annual Estimates of the Resident Population by Race and Hispanic Origin for Counties in Massachusetts and Massachusetts and U.S. Totals, April 1, 2010 to July 1, 2013

Appendix A2: Annual Estimates of the Resident Population by Race and Hispanic Origin for Counties in Massachusetts April 1, 2010 to July 1, 2013 as a Percentage of the County Population

Appendix B: Trends in Minority Population Growth in Massachusetts Counties: Estimated Percentage of Non-Hispanic White Alone Population Compared to Minority Population by County, 2010-2013

Appendix C: Comparison of Selected Age Groups in Massachusetts Counties: Estimated Population and Percent of Population, 2013

Appendix D1: Annual Estimates of the Resident Population by Selected Age Groups for Massachusetts Counties and Massachusetts and U.S. Totals, 2010-2013

Appendix D2: Trends in Selected Age Groups as a Percentage of Population for Massachusetts Counties: and Massachusetts and U.S. Totals, 2010-2013

Map 1: Estimated Percent of Minority Population by Massachusetts County, 2013

Map 2: Estimated Change in Percent Minority as a Percentage of Total County Population, 2010-2013

Map 3: Estimated Median Age by Massachusetts County, 2013

Map 4: Estimated Percent of County Population Under 5, 2013

Map 5: Estimated Percent of County Population over 65, 2013

Map 6: Estimated Percent of County Population 18-64, 2013

Map 7: Estimated Percent of County Population under 18, 2013

Summary Prepared by:

Susan Strate

William Proulx

Joseph Garland

Steffen Herter

6/26/2013