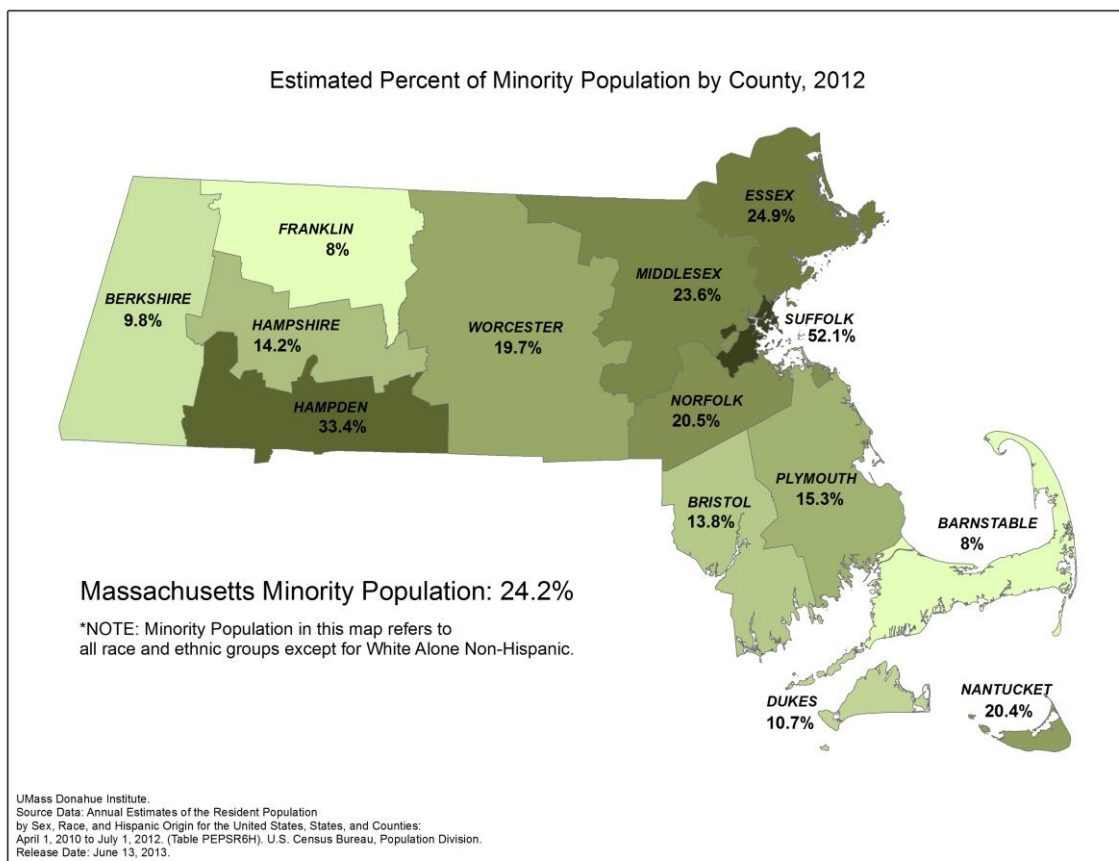


University of Massachusetts Donahue Institute Population Estimates Program Summary of U.S. Census Bureau 2012 County Characteristics For Release June 13, 2012

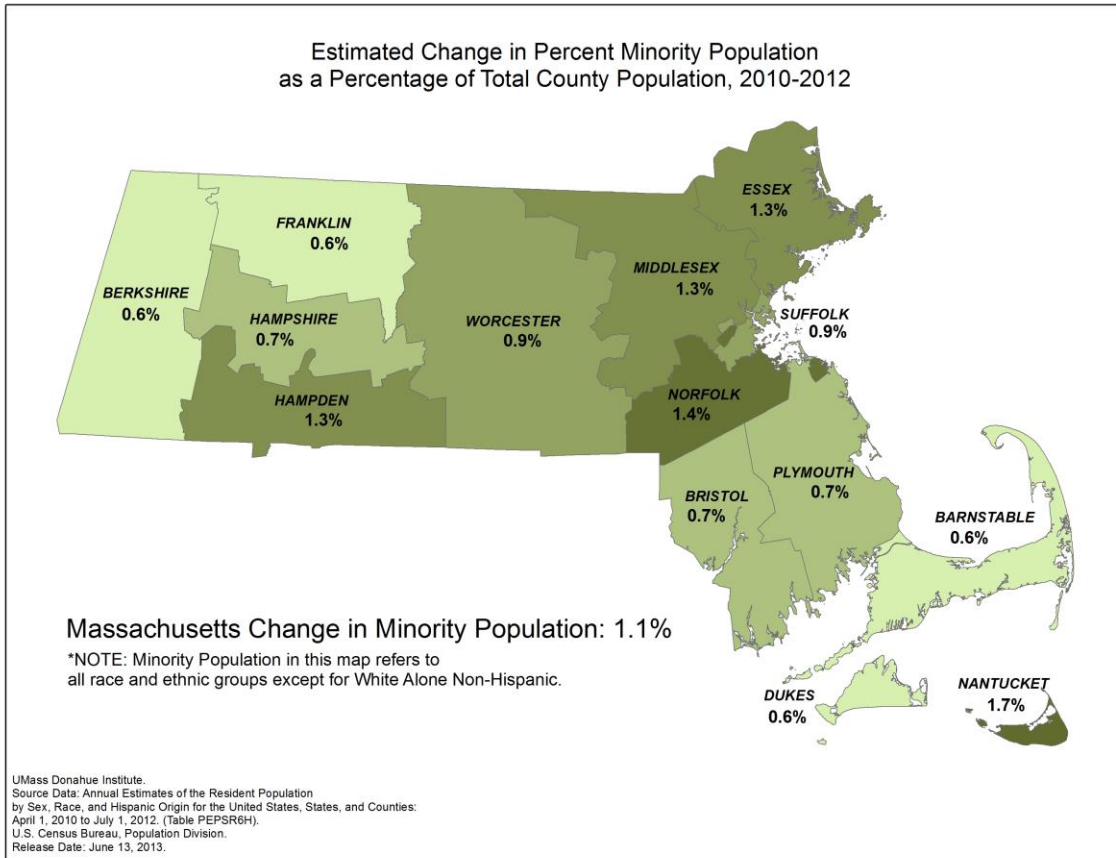
On June 13, 2013, the U.S. Census Bureau released its 2012 State and County Characteristics Estimates for Massachusetts, Puerto Rico and the United States. These estimates break down the estimated 2012 county populations, released in May of 2013, by age, sex, race, and Hispanic origin. The official U.S. Census Release and detailed tables can be found at: <http://www.census.gov/newsroom/releases/archives/population/cb13-112.html>

The estimates for Massachusetts follow the national trend, showing a population that is growing older and more racially and ethnically diverse. However, Massachusetts is less racially and ethnically diverse than the U.S. as a whole. The minority population, defined here as Hispanic and non-white/non-Hispanic, has grown in all counties since 2010, and, in fact, since 2000 and beyond. However, the minority population in Massachusetts still represented just 24.2% of the state population in 2012, as compared to 37% in the U.S. as a whole.



The Massachusetts counties with the greatest percentage of minority populations in 2012 were Suffolk (52.1%), Hampden (33.4%), and Essex (24.9%). The counties with the lowest percentage minority were Barnstable (8.0%), Franklin (8.0%), and Berkshire (9.8%).

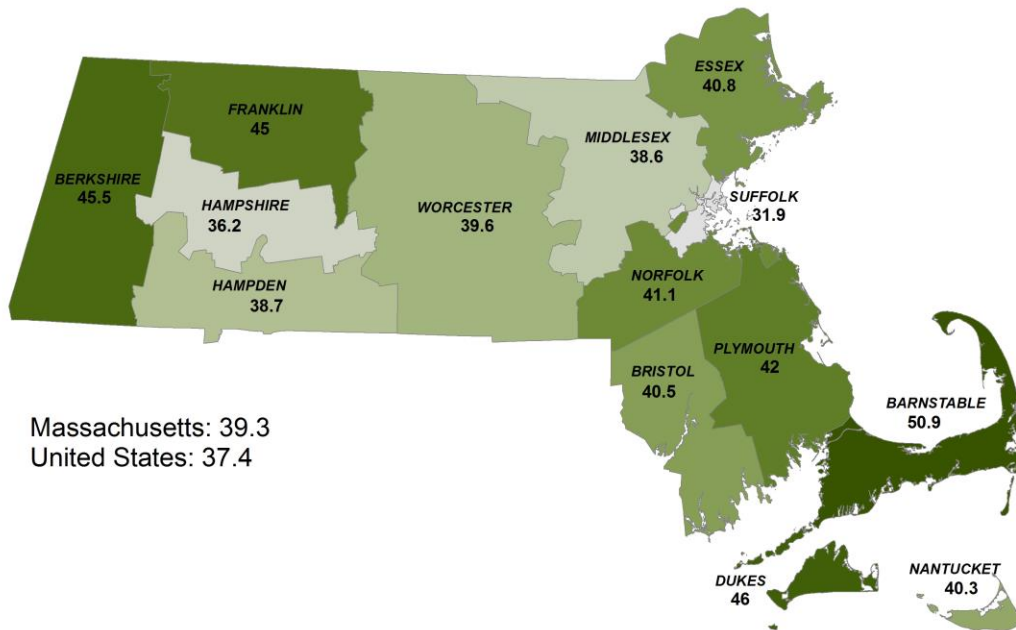
The greatest increases in the percent of minority population as a percent of the total population since 2010 (by percentage point gain) were seen in Nantucket, Norfolk, and Essex Counties. Barnstable, Franklin, and Berkshire Counties showed the least change in percent minority since 2010, and were also the three Massachusetts counties that lost population in the July 1, 2011 to 2012 period. (See Appendix B to this report for all Massachusetts counties.)



The counties with the highest percentage of Hispanic residents in Massachusetts in 2012 were Hampden (22%), Suffolk (20.8%), and Essex (17.4%); those with the smallest were Barnstable, Dukes, and Plymouth (2.4%, 2.6%, and 3.4%, respectively). The overall Massachusetts population was 10.1% Hispanic in 2012, compared to 16.9% Hispanic for the U.S.

Massachusetts is also older than the U.S. as a whole, with a median age of 39.3 years in 2012, compared to a median of 37.4 in the U.S. Counties with the highest median age include Barnstable (50.9 yrs.), Dukes (46 yrs.), and Berkshire (45.5 yrs.), while the youngest counties include Suffolk (31.9 yrs.), Hampshire (36.2 yrs.), and Middlesex (38.6 yrs.). See map below and Appendix C to this report for details.

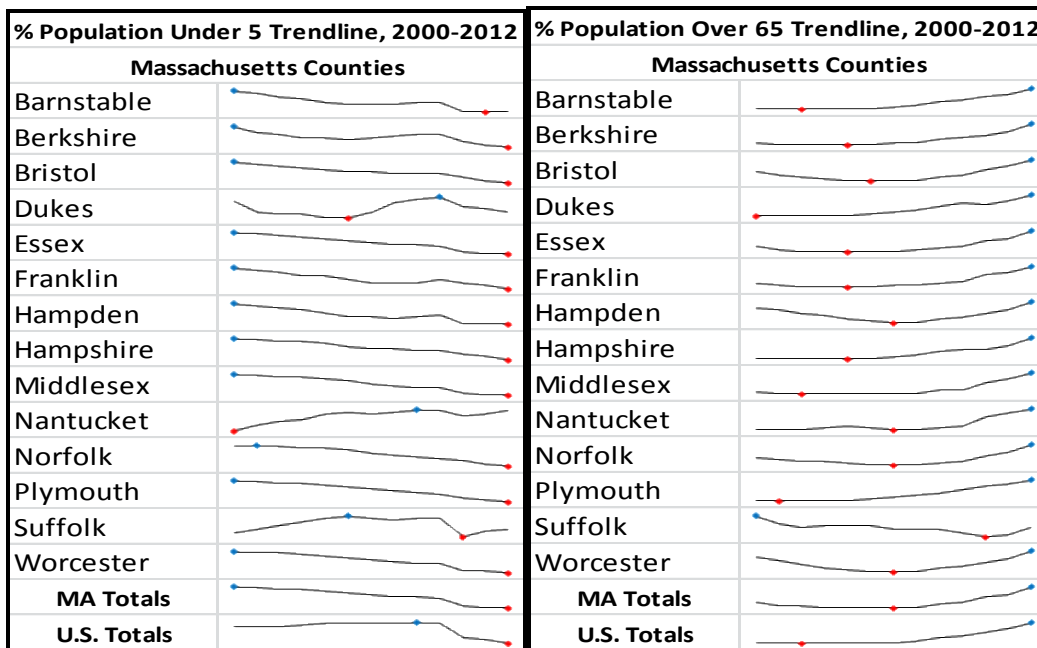
Estimated Median Age in Massachusetts by County, 2012



Massachusetts: 39.3
United States: 37.4

UMass Donahue Institute.
Source Data: Annual Estimates of the Resident Population for Selected Age Groups by Sex for the United States, States, Counties, and Puerto Rico Commonwealth and Municipalities: April 1, 2010 to July 1, 2012. (Table PEPAGESEX). U.S. Census Bureau, Population Division. Release Date: June 13, 2013

The ageing population in Massachusetts, as with the U.S. as a whole, is reflected in the long term trends among age cohorts. Since 2000 and beyond, the percentages of persons over 65 in the population have increased while the percentages of children under 5 have been decreasing, on average. The trend lines below show how the percentages of these age groups have changed since 2000, by county and for Massachusetts and the U.S. The highest points in the time series are represented by blue dots, the lowest by red.



Comparing the percentage of the Hispanic population by county against the median age by county, we see that Massachusetts follows the national trend in which a higher percentage of Hispanic population generally relates to a lower median age. New estimates released by the U.S. Census Bureau for the Nation shows that the Hispanic population has a median age much lower than the Non-Hispanic; 27.8 years compared with 40.1 years for the non-Hispanic U.S population. Likewise in Massachusetts, the median age among the Hispanic population is 27, compared to 41.2 for Non-Hispanic.

At the county level, we see that the Barnstable and Dukes Counties are the two oldest in Massachusetts, in terms of median age, and are also the two counties with the lowest percent of Hispanic population. On the other hand, the “youngest” county, Suffolk, has the second highest percentage of Hispanic population in Massachusetts.

The new Census Bureau data (see Table PEPASR6H) also shows that nearly half (49.9 %) of the nation’s children younger than five were a minority in 2012 with 25.8% of all children under 5 categorized as Hispanic. In Massachusetts, 37.1% of children younger than five were a minority in 2012 and 17.5% were Hispanic. One can also compare the *Estimated Percent Minority Population by County* map to the *Estimated Percent of County Population Under 5* map attached to this report to get a sense of how race and ethnicity relate to age around Massachusetts.

For more details on selected Massachusetts characteristics data and trends, please refer to the tables in the appendices to this document. You may also view the complete datasets by visiting the U.S. Census Bureau’s Estimates page at: <http://www.census.gov/popest/estimates.html>

Attachments to this report include:

Appendix A1: Annual Estimates of the Resident Population by Race and Hispanic Origin for Counties in Massachusetts and Massachusetts and U.S. Totals, April 1, 2010 to July 1, 2012

Appendix A2: Annual Estimates of the Resident Population by Race and Hispanic Origin for Counties in Massachusetts April 1, 2010 to July 1, 2012 as a Percentage of the County Population

Appendix B: Trends in Minority Population Growth in Massachusetts Counties: Estimated Percentage of Non-Hispanic White Alone Population Compared to Minority Population by County, 2010-2012

Appendix C: Comparison of Selected Age Groups in Massachusetts Counties: Estimated Population and Percent of Population, 2012

Appendix D1: Annual Estimates of the Resident Population by Selected Age Groups for Massachusetts Counties and Massachusetts and U.S. Totals, 2010-2012

Appendix D2: Trends in Selected Age Groups as a Percentage of Population for Massachusetts Counties: and Massachusetts and U.S. Totals, 2010-2012

Map 1: Estimated Percent of Minority Population by Massachusetts County, 2012

Map 2: Estimated Change in Percent Minority as a Percentage of Total County Population, 2010-2012

Map 3: Estimated Median Age by Massachusetts County, 2012

Map 4: Estimated Percent of County Population Under 5, 2012

Map 5: Estimated Percent of County Population over 65, 2012

Map 6: Estimated Percent of County Population 18-64, 2012

Summary Prepared by:

Susan Strate

William Proulx

Joseph Garland

6/13/2013